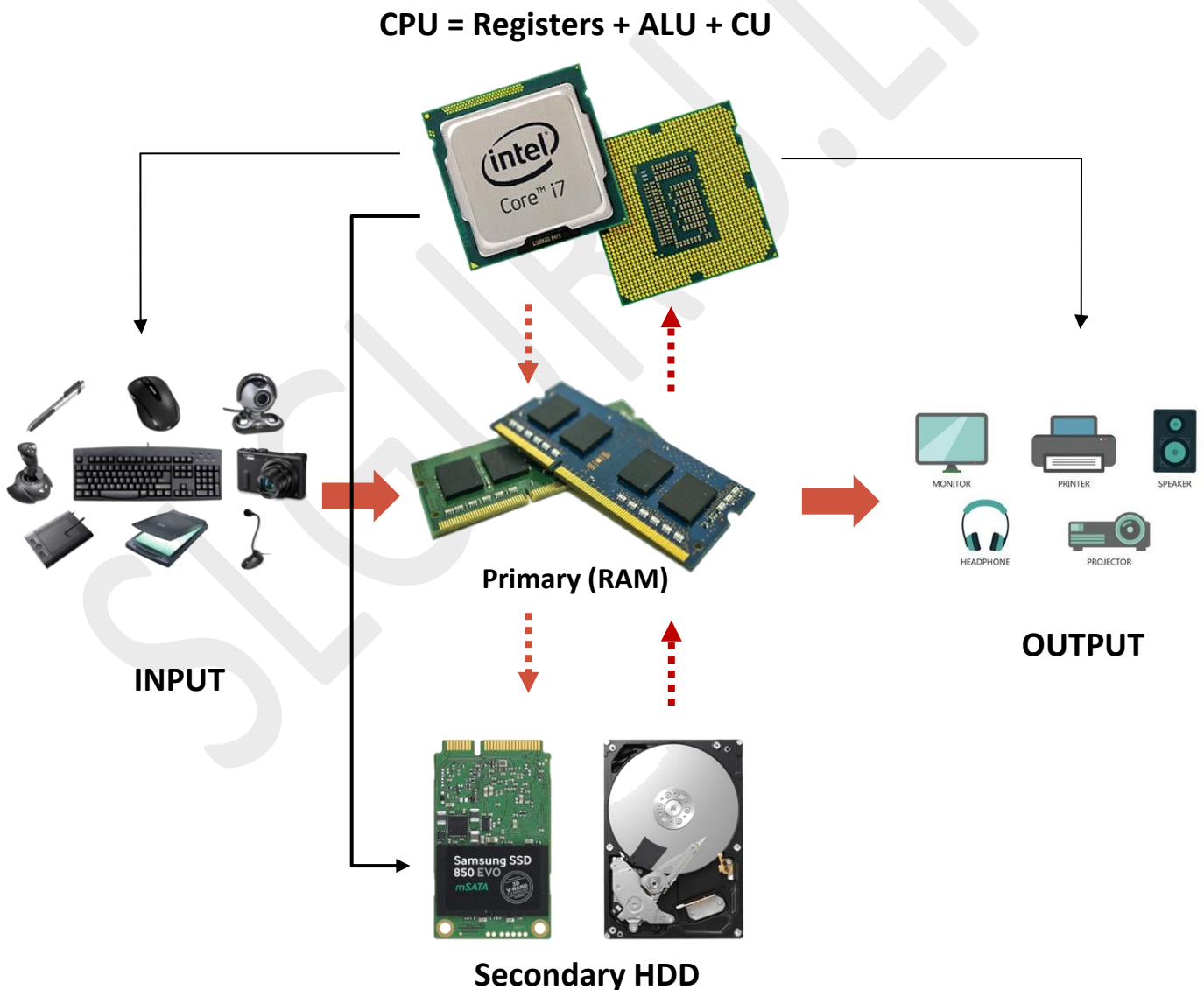


What is a computer?

A computer is an electronic device that makes mathematical calculations and logical comparisons. And also can input data, process them according to a list of instructions (program) and output the results.

Functions of computer



### RAM vs ROM

RAM	ROM
1GB to 64GB	1MB to 10MB
Volatile	Non-Volatile
Temporary Storage	Permanent Storage
Access speed is faster than ROM (read and write speed)	Access speed is slower than RAM (read and write speed)

### CRT vs LCD/LED

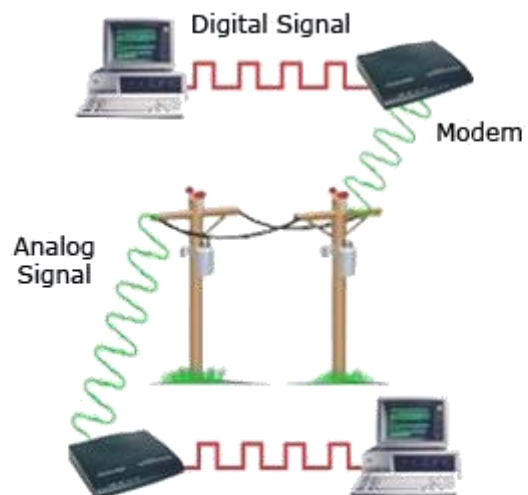
CRT	LCD/LED
Low resolution	High resolution/ High Quality Images
Heating problems	No heating problems
Power consumption high	Power consumption low
Take more space	Take less space

### Computer network devices

HUB	SWITCH
Half Duplex	Full Duplex
4/12 ports	24/48 ports
Low security level	High security level
Low speed	High speed
Send data to all computers	Send data to relevant computers

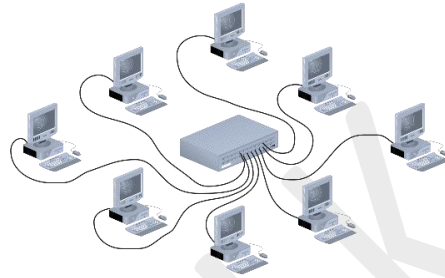
### Function of modem

Convert analog signal to digital signal and also convert digital signal to analog signal.

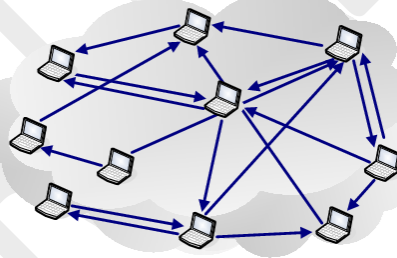


## Network Topology

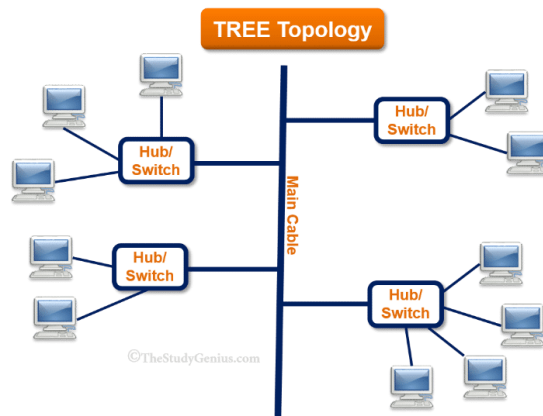
Star Topology



Mesh Topology



Tree Topology



### Advantages and Disadvantages of Networking

Advantages	Disadvantages
Data sharing	Data loss with network problems
Hardware sharing	Virus
Internet access	Security issues
Central storage of data	Training requirement
Connect any time	-
Communication with other users	-

SLGURU.LK